

TEL 030

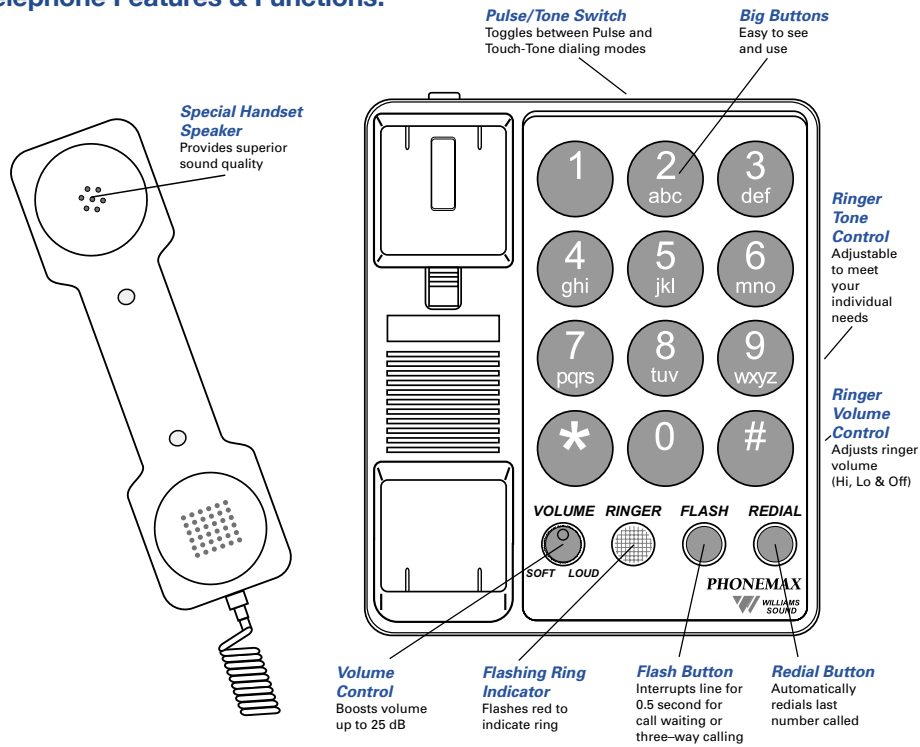
PhoneMax™ Amplified Telephone



The PhoneMax improves speech understanding. By boosting the high frequencies that make speech understandable, the PhoneMax gives you special help in communicating over the phone. The PhoneMax's extra loud ringer and flashing ring indicator alert you to incoming calls, while flash and redial buttons make dialing outgoing calls convenient. The clean white design and high-contrast controls make it an attractive addition to your desktop or wall. Exceptional value, exceptional price!

PhoneMax™ Amplified Telephone

TEL 030 Amplified Telephone Features & Functions:



| | |
|-----------------------------------|---|
| Dimensions: | 2.2" D, 8.9" H, 7.6" W (56 mm D, 226 mm H, 192 mm W) |
| Color: | White with dark gray controls |
| Wide-Band Acoustic Gain: | 17 dB maximum |
| Max. HF Acoustic Gain: | 25 dB |
| Audio Freq. Response: | 300 Hz to 2800 Hz, ± 3 dB |
| Sat. Acoustic Output: | 112 dB SSPL |
| Total Harmonic Distortion: | < 3% at 105 dB SPL output, 1000 Hz |
| Signal-to-Noise Ratio: | 51 dB, NAB weighted |
| Ringer Volume Control: | Hi, Lo, Off |
| Ringer Loudness: | 80-85 dBA SPL at 1 meter (Hi position) |
| Ringer Pitch Control: | Adjustable, 3 positions (lo, med, hi) |
| Flasher: | High visibility red neon lamp |
| Connections: | 2-wire central office connection, modular plug |
| Ringer Equiv. No. (REN): | 1.0B |
| Approvals: | WEEE |
| Warranty: | Five years, parts and labor - 90 days on accessories. |

NOTE: SPECIFICATIONS SUBJECT TO CHANGE WITHOUT NOTICE

Domestic Sales

Williams Sound
10300 Valley View Rd
Eden Prairie, MN 55344
Ph: 800-328-6190 / 952-943-2252
FAX: 952-943-2174
Email: info@williamssound.com
Web: www.williamssound.com

International Sales

International Sales Department
Williams Sound
10300 Valley View Rd
Eden Prairie, MN 55344 USA
Phone: +1 952 943 2252
Fax: +1 952 943 2174
Email: info@williamssound.com
Web: www.williamssound.com



WILLIAMS SOUND®
HELPING PEOPLE HEAR

800.843.3544 / info@williamssound.com / www.williamssound.com